



Caring: a matter of individual behaviour and responsibility

Dr. Márton András, Caritas Alba Iulia

Our basic presumptions are
determining our behavior

- ✓ How does a human being functioning
- ✓ What does its wellbeing mean?
- ✓ How this could be promoted?

Main questions for carers

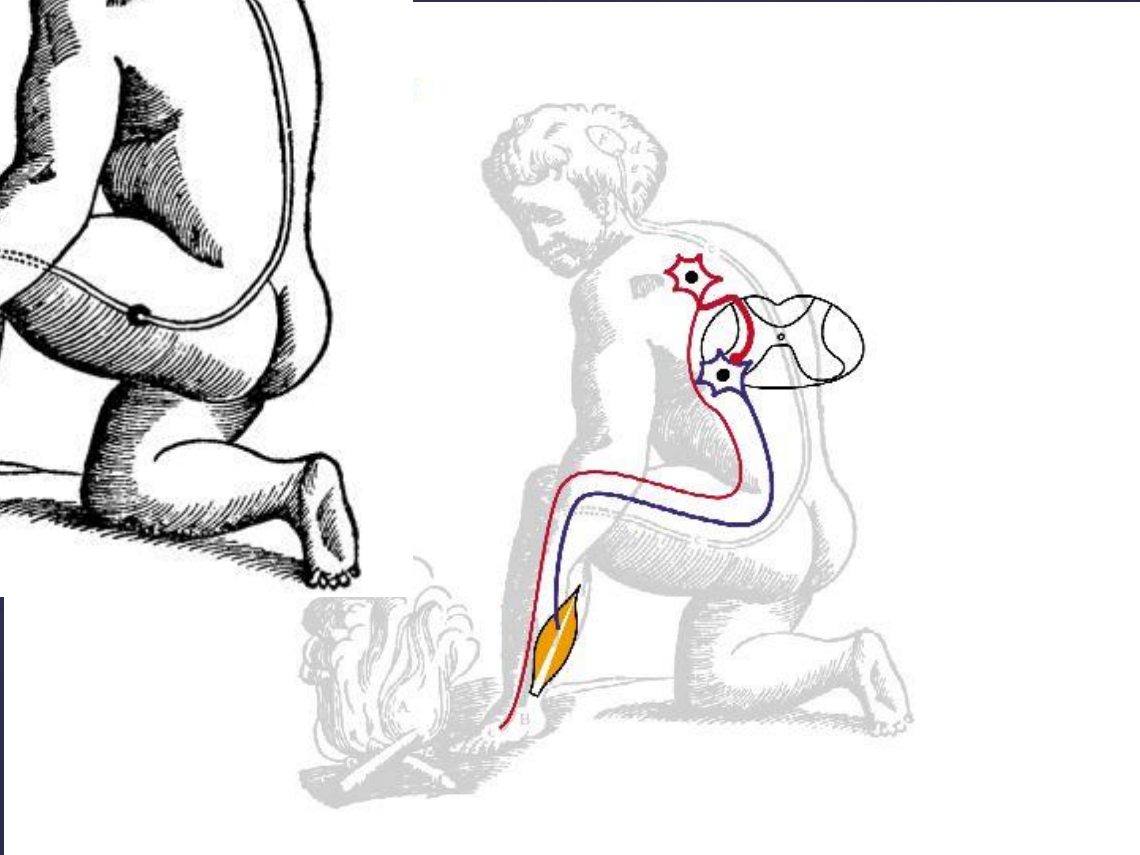
Valueriãs figura omnium partium capitis humani cum sua
explicatione.



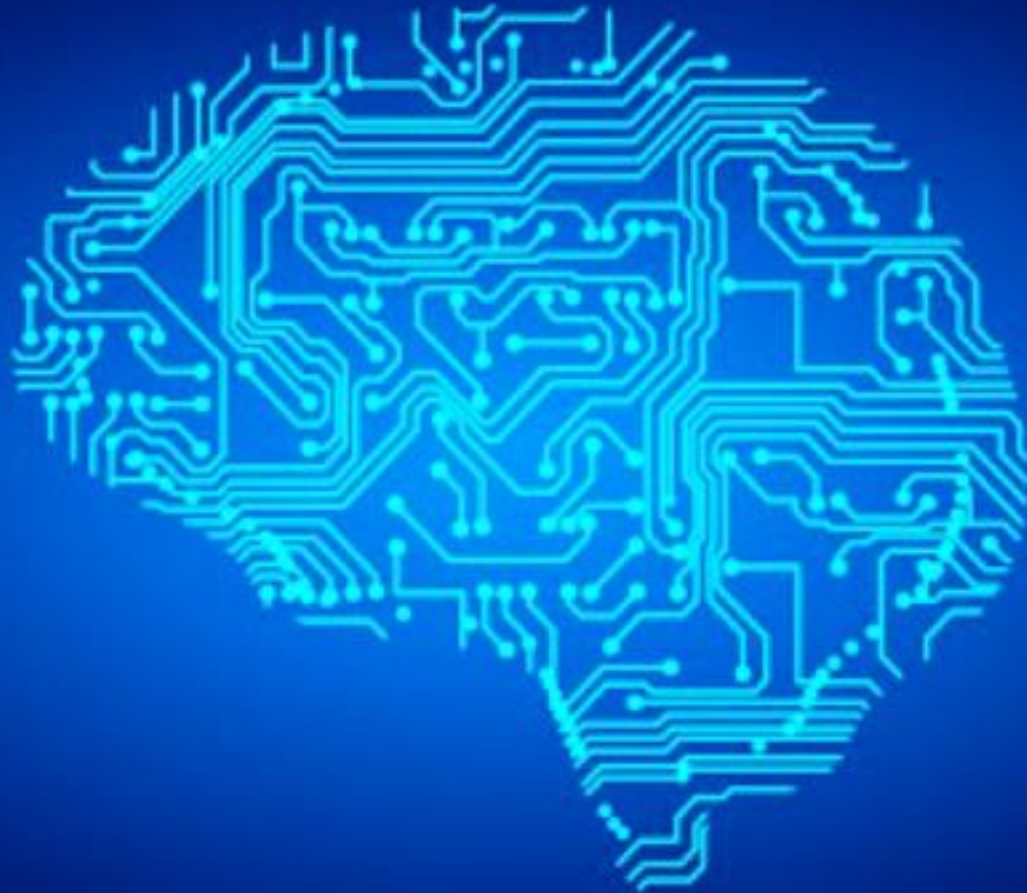
Handwritten notes and labels at the top of the second page, including 'Sanguis', 'Cognitas', and 'II. Visceritas'.



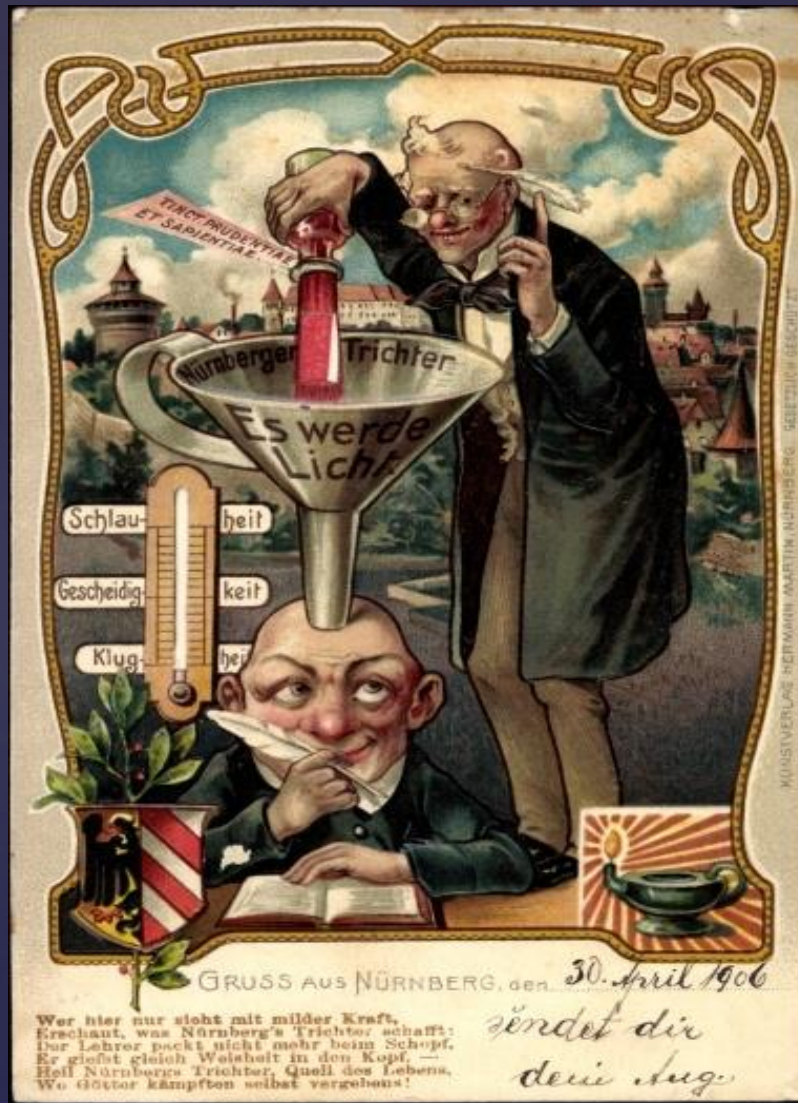
Basic presumptions



Basic presumptions



Basic presumptions



Basic presumptions



Basic presumptions

- ✓ Scientia – Systema
- ✓ III. Person – I. Person method
- ✓ Trivial systems – Non trivial systems

Science and
scientific approach



Logic is a poor model of cause and
effect.

— *Gregory Bateson* —

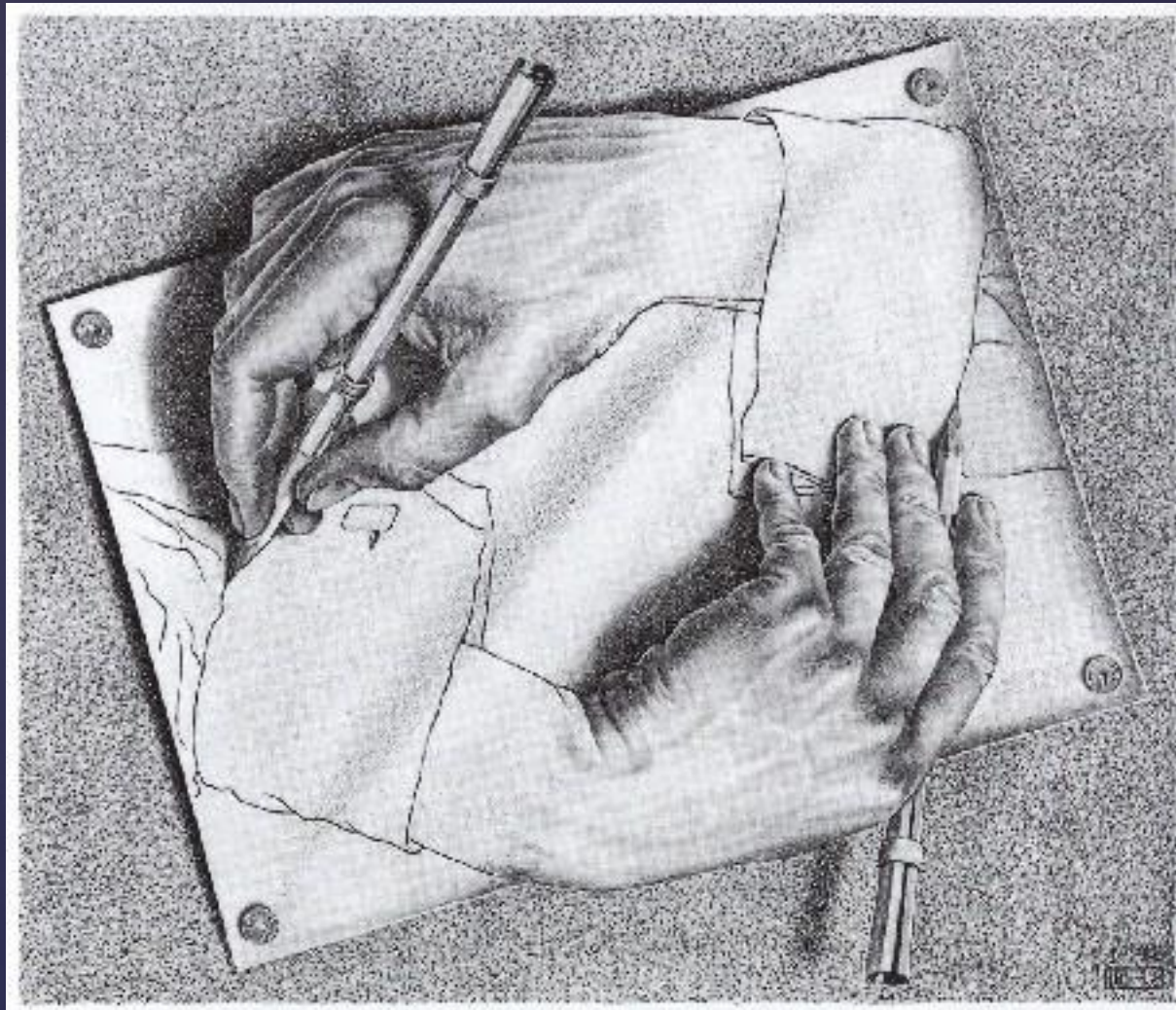
AZ QUOTES



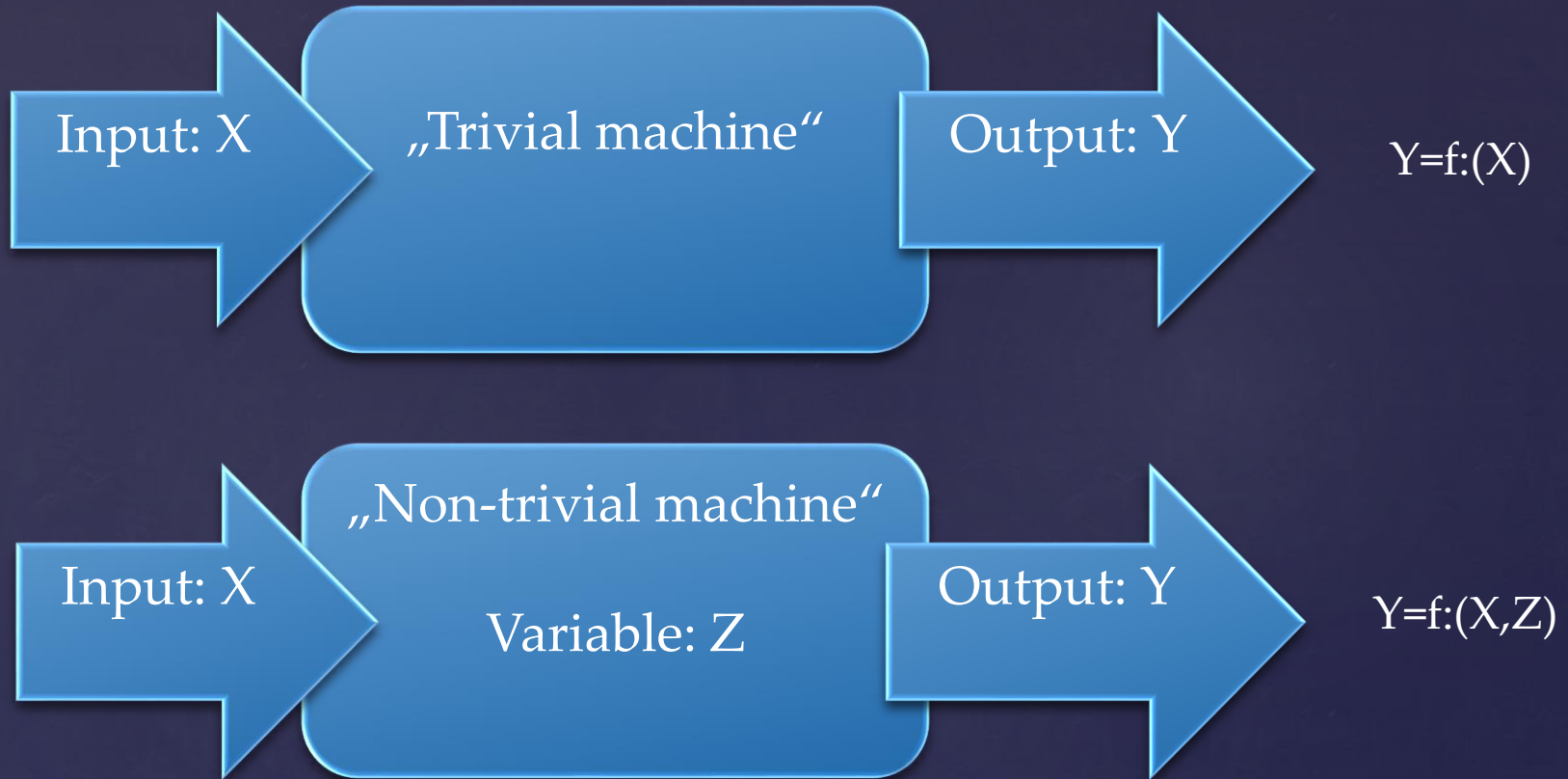
Linearity - Circularity

- ✓ Non trivial
- ✓ Operationally closed
- ✓ Autopoietic
- ✓ Self-regulating
- ✓ Reactive

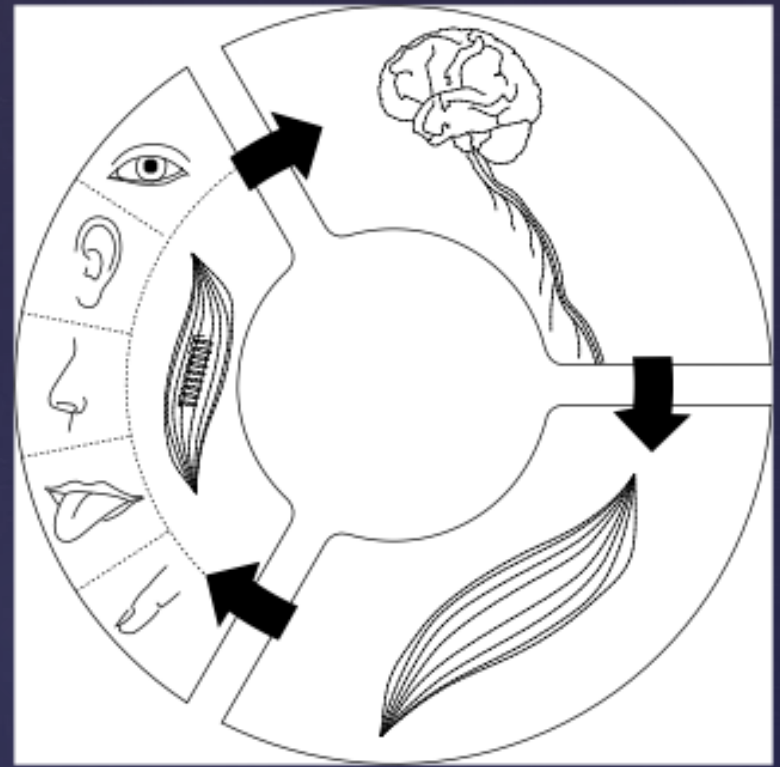
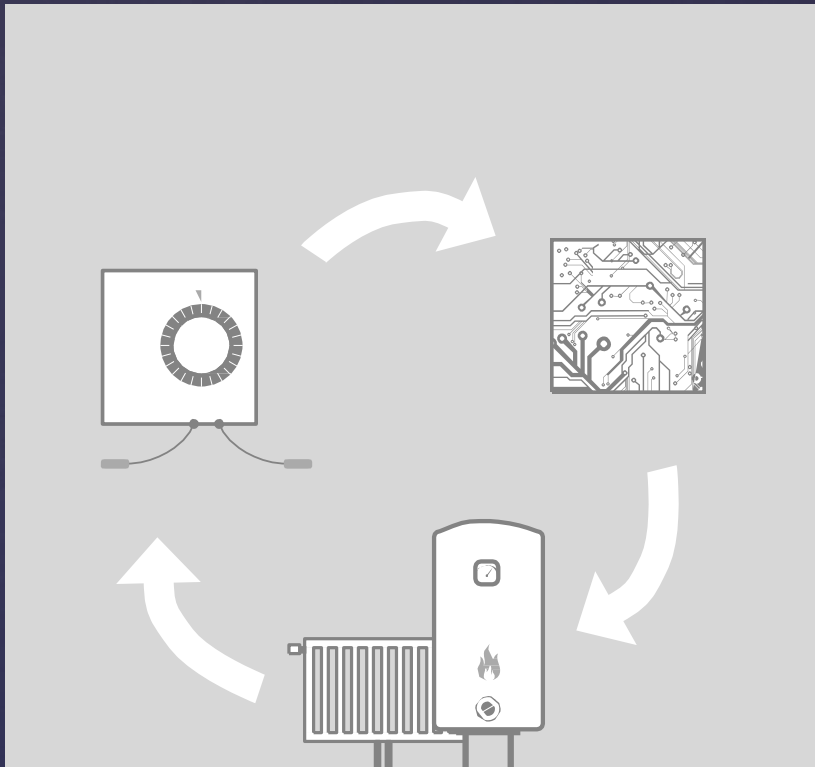
Functioning of the subject



Circularity



Trivial – Non trivial



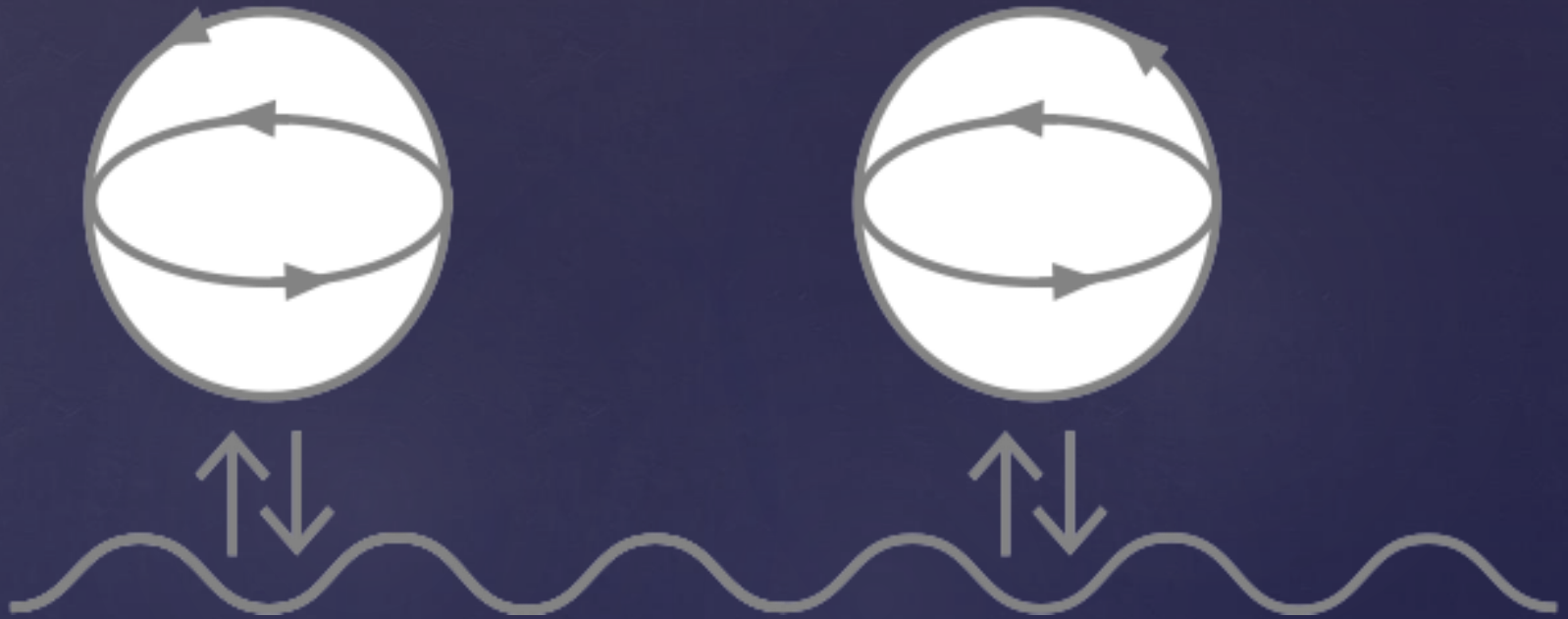
Feedback-Control

- ✓ Perpetual failure correction
- ✓ Triggered by function and functionality
- ✓ “We cannot not learn”

(Behavioral)-learning



Functioning of the subject



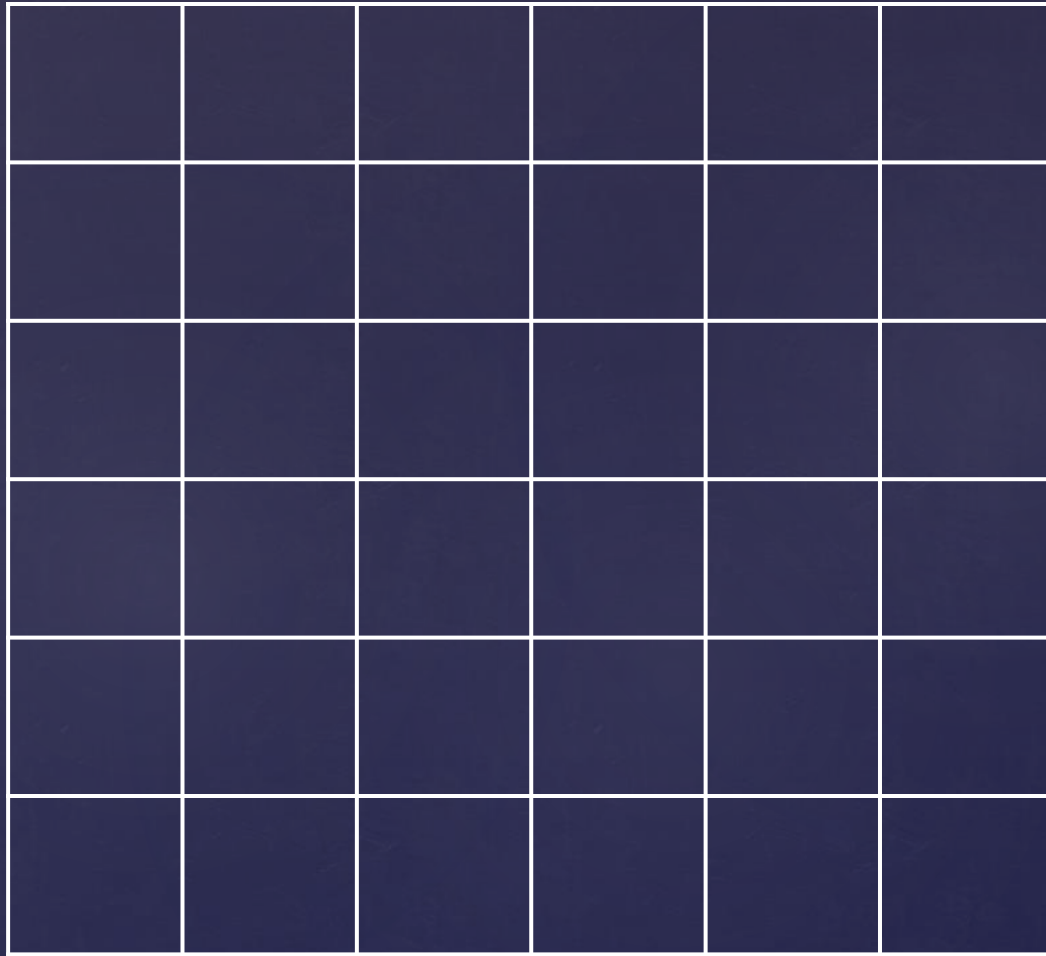
Interactions



There are times when I catch myself believing that there is such a thing as something; which is separate from something else.

— *Gregory Bateson* —

AZ QUOTES



How many quadrants can you count?



Objectivity is a subject's delusion
that observing can be done without
him

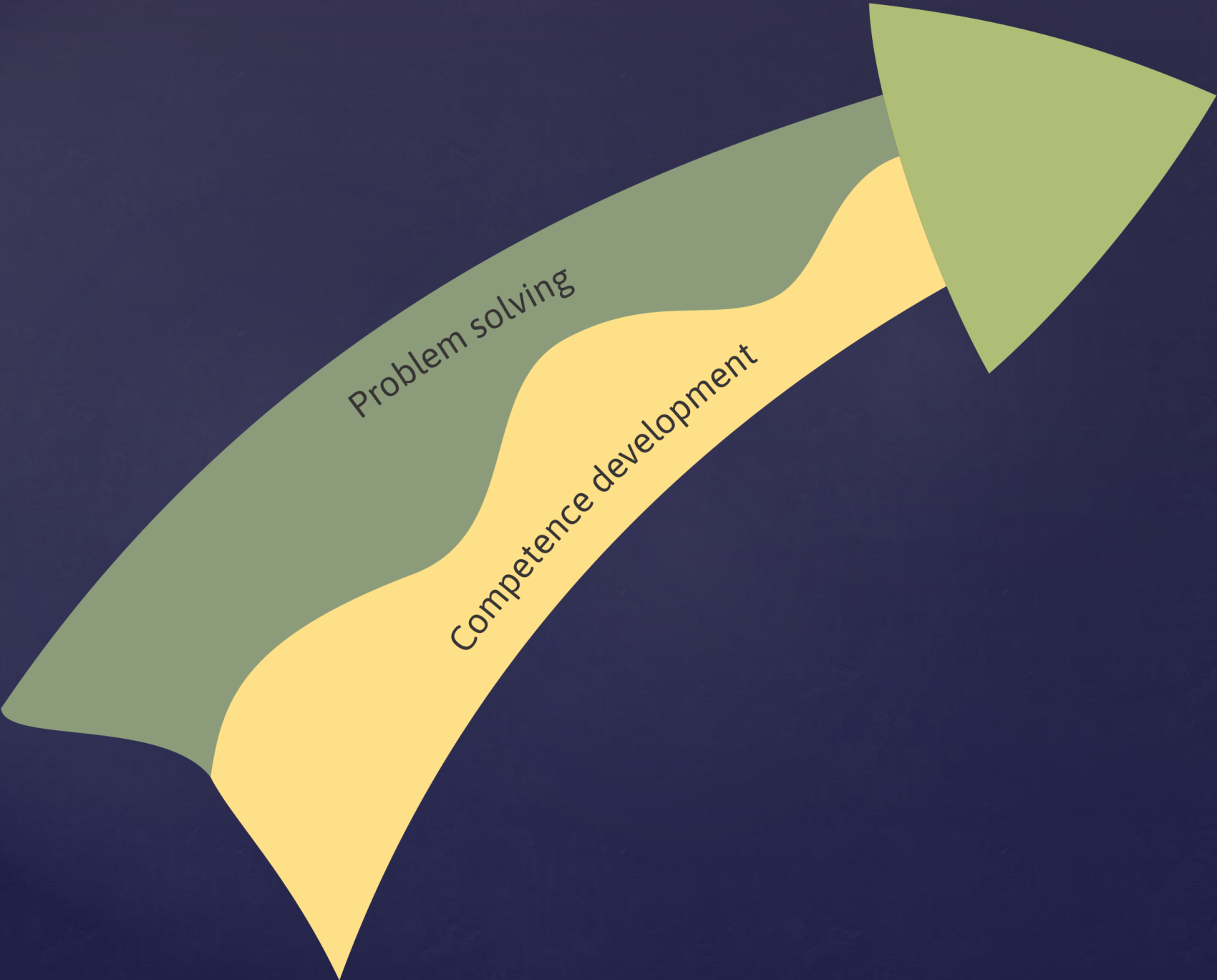
— *Heinz von Foerster* —

AZ QUOTES

✓ What does it mean to be part of a cybernetic system? For a conscious human being it means taking part in an evolving loop, where you are both the subject and the object of experimentation.

✓ (Brian Holmes)

Cybernetic modell



Problem solving

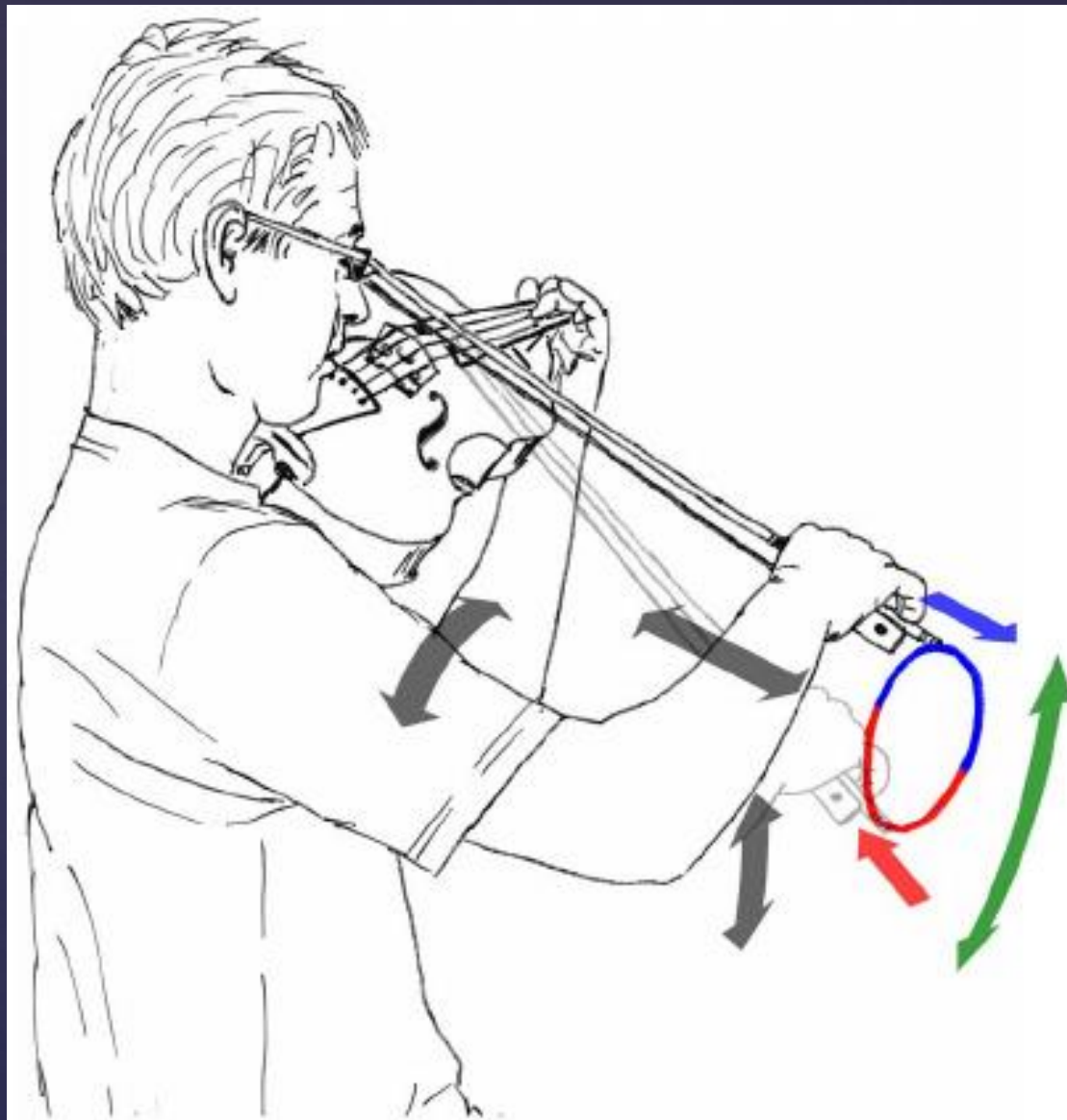
Competence development



Forms of interactions

- ✓ Trivial versus non-trivial approach to all forms of human interaction

ME-YOU or ME-IT



Body tracking



Pair tracking



Instrumented body tracking



Social tracking

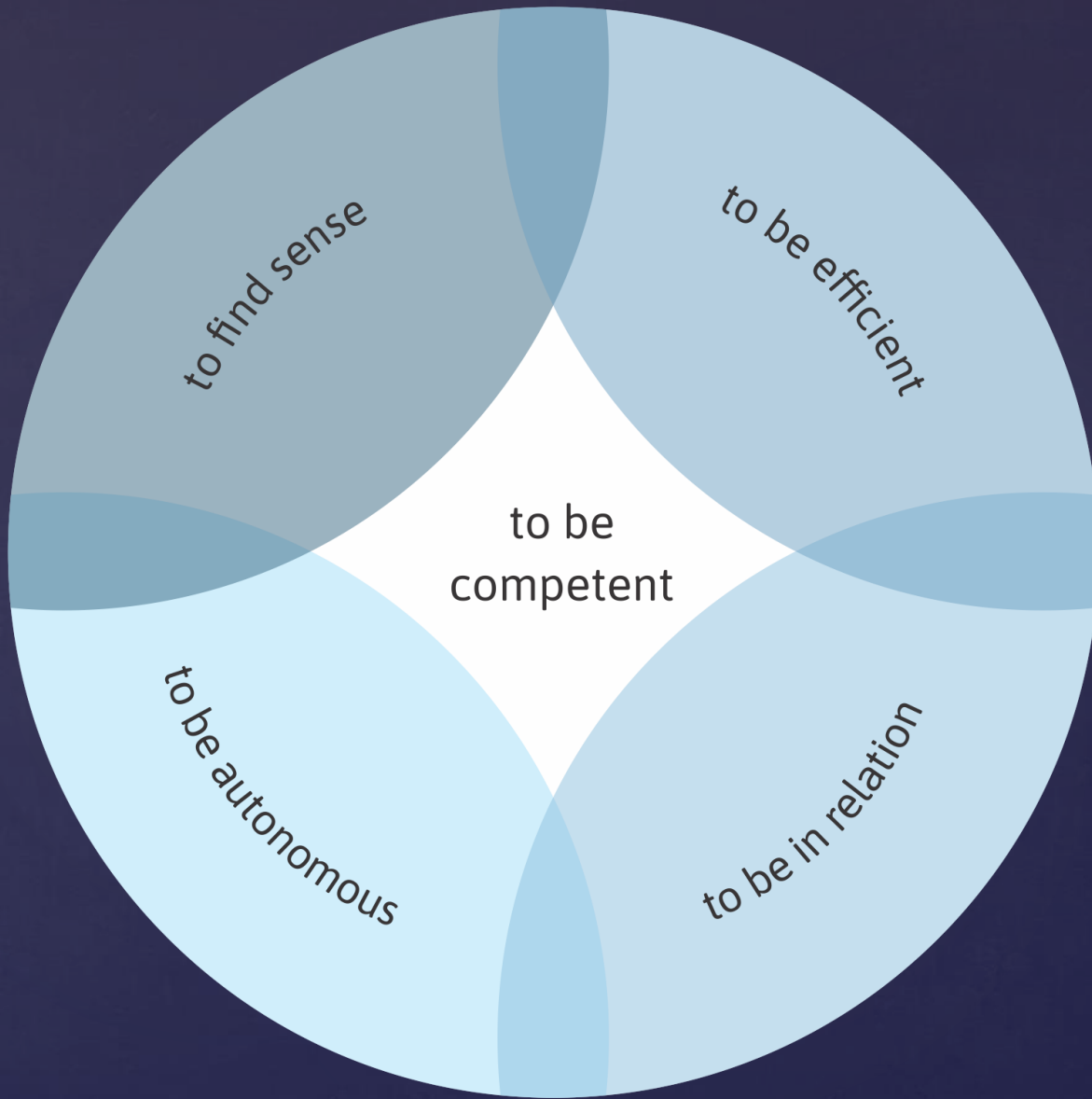


Patterns

✓ The structure of society is built
in its procedural memory
system

Jean Piaget

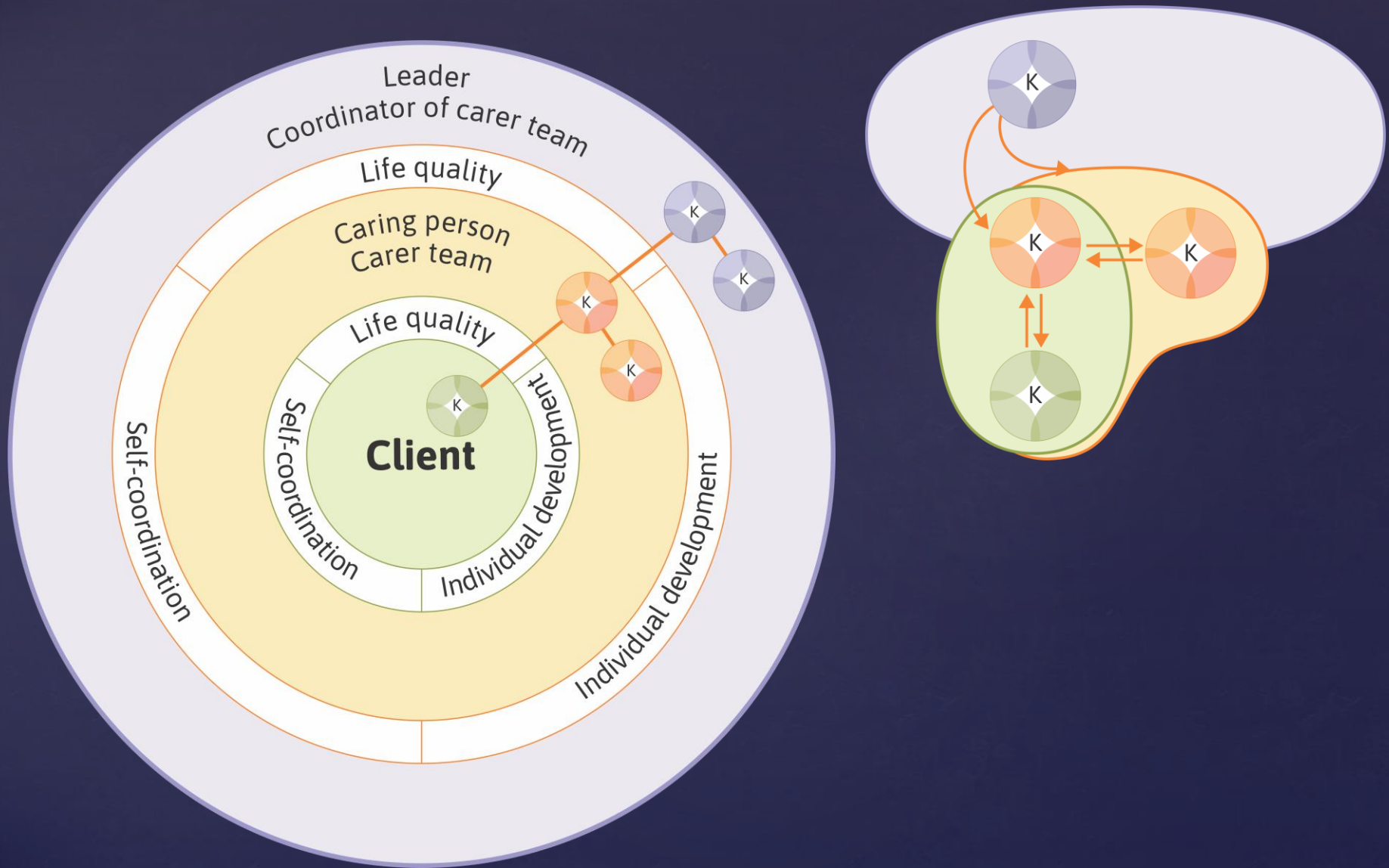
Patterns to behavioral
regularities



The Integral Quality Model

- ✓ Real-time individual competence and creativity cannot be organized

ME-YOU or ME-IT



Extrapolating to organizations

Thank you for your
attention!



Habilitation